



Eshfaa

Healthcare from A 2 Z

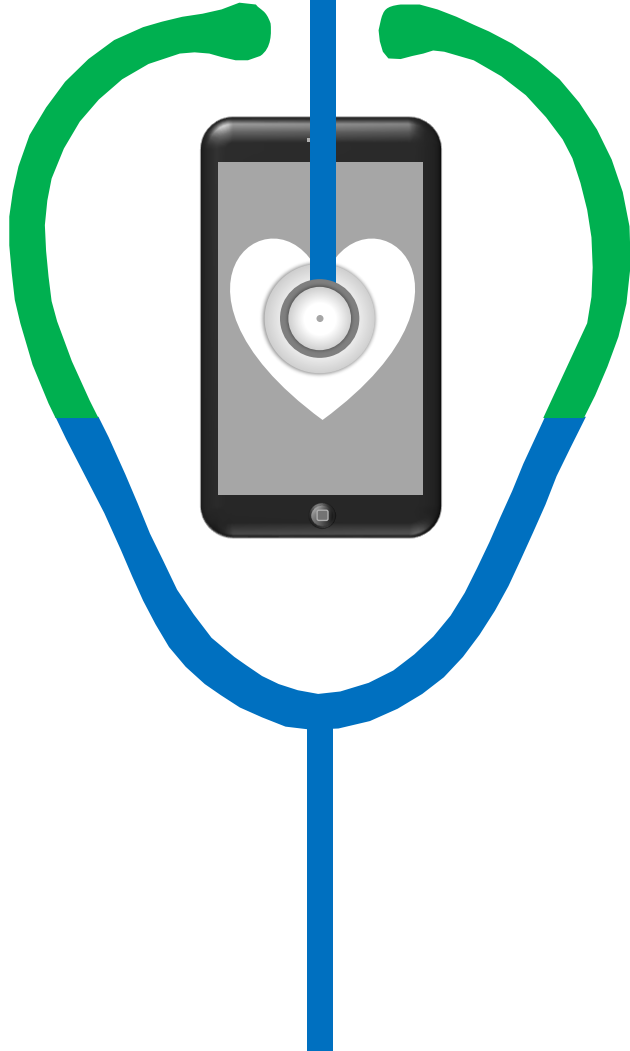


www.Eshfaa.com



01200777738





Contents

1. Who we are? What's Eshfaa?
Eshfaa nature, Vision & Mission.
2. What we believe in & keen on?
Eshfaa Core Values & Eshfaa 4Cs Cycle.
3. Why we are unique?
Added values & Competitive edge.
4. What we deliver?
Scope of Eshfaa, our main Programs & services.
5. Who are our healthcare providers?
Eshfaa network of providers & collaborators.
6. Who are our customers?
Corporates, Charities & NGOs.
7. How to reach us?
Our HQ, contacts, website & social media accounts



Who is Eshfaa?

Eshfaa is digital platform specialized in **Person-centered care (PCC)**, through professional **case management & care coordination** by professional experienced medical support team.

Eshfaa is established to be your **medical companion**, to have best healthcare **journey** from A to Z, with best **patient experience management**
To ensure person-centered care.



Who is Eshfaa

Eshfaa Vision & Mission:

Vision

- To be the best Digital Healthcare service platform in MENA, that enables digital access to have **integrated healthcare services** with high quality & affordable cost.

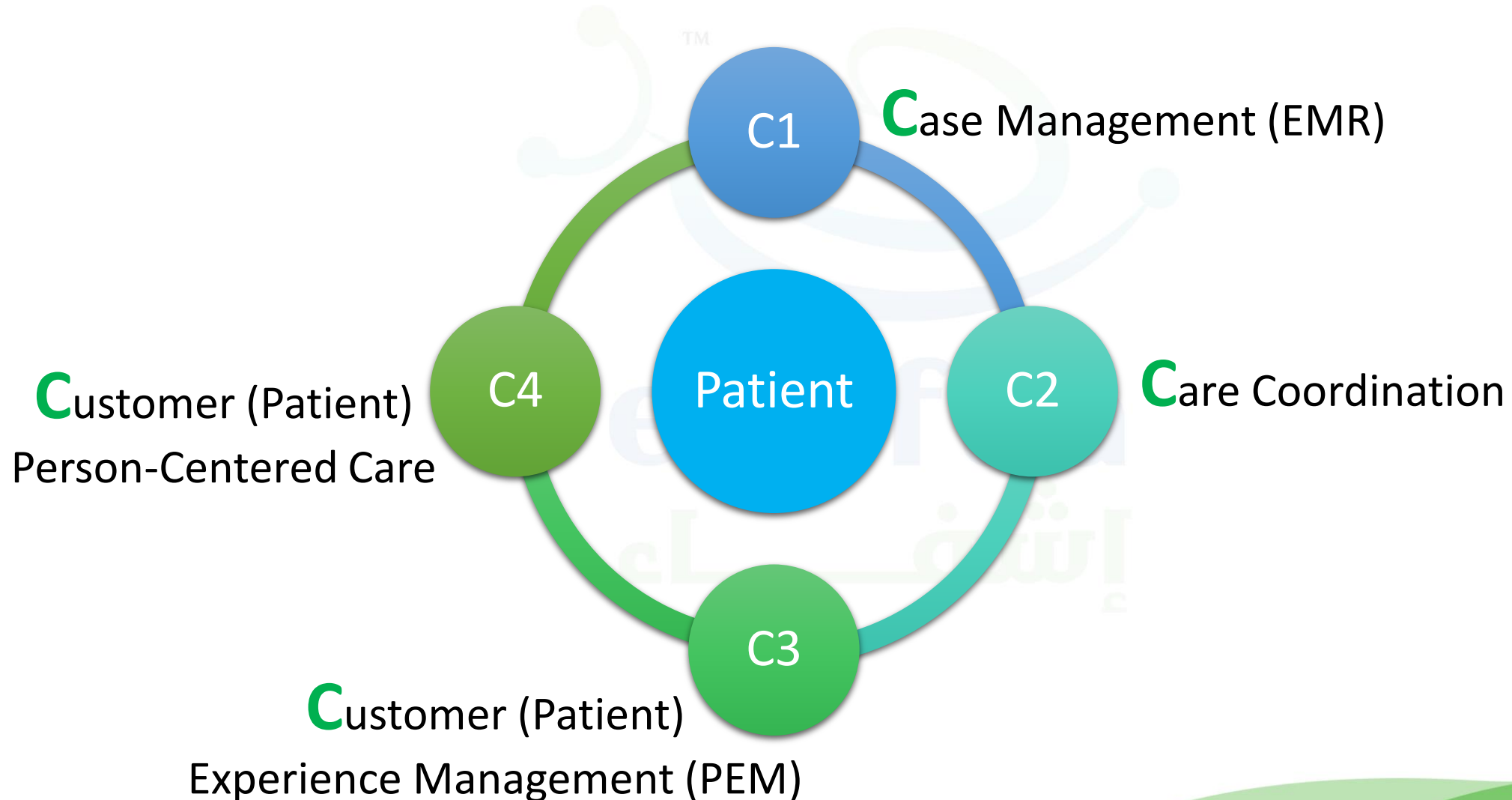
Mission

- To provide best **Patient Experience Management (PEM) & Person-Centered Care** with professional Case Management & Care Coordination with highest Healthcare Quality standards

Eshfaa Core Values:



Eshfaa 4Cs Cycle:



Why Eshfaa?

1. Free subscription.
2. No Annual Fees.
3. No Monthly Fees.
4. No Need for discount cards.
5. No Age limitation.
6. No restriction for any health status or chronic diseases.
7. No Exclusion for any family member.
8. No need for papers.
9. No prior approvals.
10. No limitation on medications.

Why Eshfaa





Why Eshfaa?

1. Experienced well-trained **medical support team**, professional in case management & care coordination.
2. Highly Qualified carefully selected **Healthcare professionals** of doctors, physiotherapists, pharmacists, nurses, chemists & technicians.
3. Strong wide-spread **Medical network** combines +4500 providers covering all governorates, including high class hospitals, medical centers, clinics, labs, radiology centers & giant pharmacy chains.
4. Applying highest **healthcare quality standards** of service delivery, case management & care coordination to ensure best patient experience management to achieve Person-centered care.
5. Focusing on value for customers, providing more benefits & less costs to ensure **Value-based care**.



Why Eshfaa?

6. Providing **Integrated healthcare service** programs, combines all needed medical services at one place, either at home, on-site or at different healthcare facilities.
7. **Digitalization of healthcare services**, with paperless system of case management through Electronic Medical Records (EMR), with competent Healthcare Information Management System (HIMS), ensuring security, privacy & confidentiality.
8. **Subscription at Eshfaa programs is free**, without any annual or monthly subscriptions, without paying for discount cards, pay only for needed service with highest available discounts.
9. **Covering all family members** without exclusion of any relative, Covering all ages without limitation for age, Covering all diseases without limitation for any chronic medical status or health condition, availing all required medications without limitations or prior approvals, enjoying paperless digital healthcare management system for soft copy approvals, claims.
10. Availing all methods of secured payment through **digital payment gateway**.

Eshfaa Programs:



Eshfaa Special:
For Special need patients

Eshfaa CDM:
For Chronic disease patient
Care management

Eshfaa Peri-natal:
For maternal care
During pregnancy,
after delivery & lactation

Eshfaa Geriatric:
For integrated elderly care

Eshfaa Family: for families

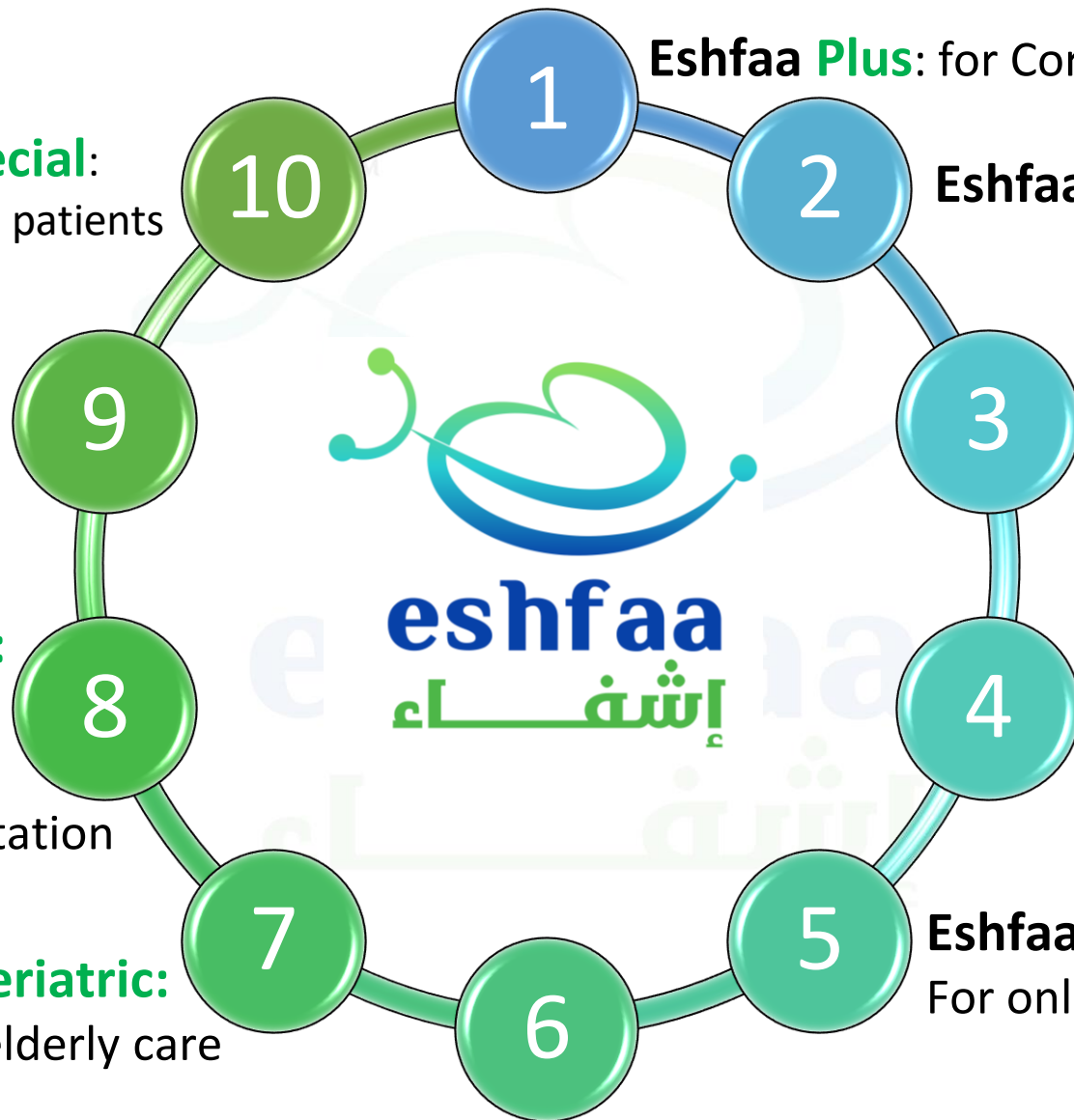
Eshfaa Plus: for Corporates

Eshfaa On-site: for work sites

Eshfaa Charity:
for Charities & NGOs

Eshfaa Homecare:
For integrated healthcare
Services at home

Eshfaa Telemedicine:
For online consultations.





1. Eshfaa Plus:

Special healthcare assurance program, designed for **self-insured** corporates.

-It enables all employees at **SMEs & startups** to have family insurance, covering all their family members, providing all healthcare services, without any annual or monthly subscription, with no need for discount cards.

-It avails a digital system of **on-demand discounted services** through Huge **network of +4500** providers



Eshfaa plus for corporates

01200777738

f @ in v t eshfaa
www.eshfaa.com





2. Eshfaa On-site:

specifically designed for corporates & **factories** which have **working sites** either in near or remote areas, where we can deliver digital integrated **occupational healthcare services**, starting from establishing **onsite clinics**, preparing it with required equipments and medications, then hiring onsite doctors (**DOS**) and nurses, availing portable radiology & laboratory services, enhancing **ergonomics** & onsite physiotherapy services, up to establishing complete **telemedicine units** supported by digital ambulance cars or aeroplanes, applying highest quality standards of **ISO 45001/2018** for occupational health care & safety management systems, with well-trained experienced staff.

Eshfaa On-site

01200777738

[f](#) [i](#) [t](#) [v](#) [t](#) [e](#) [s](#) [h](#) [f](#) [a](#) [a](#)

www.eshfaa.com



3. Eshfaa Charity:

This program is specially designed for professional **Charities & NGOs** which serve poor cases who need various **medical and surgical services** at different governorates, to support their medical cases with best **case management & care coordination** with **good quality, least available prices** & highest discounts, to **save donations** & let poor cases have best patient experience management as same as rich ones, Because their health is a shared responsibility, & they deserve to have a unique integrated healthcare experience that is no less than others.



Eshfaa Charity for NGOs



01200777738



www.eshfaa.com



4. Eshfaa Homecare: TM

Integrated homecare services including the following:

1. **Doctors at home:** "Residents, specialists & consultants" in different specialities.
2. **Physiotherapy & Rehabilitation** at home.
3. **Nursing at home:** with qualified staff of "nursing specialists, technicians & nurse aids"
4. **Laboratory** services at home.
5. **Radiology** & imaging at home: including portable Xray, ultrasound, Doppler & Duplex, ECG & ECHO at home "by cardiologists".
6. **Rental of portable equipments** to establish intermediate care unit at home.
7. **Renal Dialysis at home:** performed by professional experienced team of renal dialysis (doctors & nurses), with advanced portable dialysis machines, under supervision of urology & nephrology consultants.
8. **Ambulance cars:** for cold cases transportation from home to hospitals & vice versa.

Eshfaa Homecare

www.eshfaa.com
eshfaa

01200777738



5. Eshfaa Telemedicine:

1. For individuals:

You can request for an online consultation with one of our doctors at different specialities, either resident, specialist or consultant & you can choose your preferred doctor with best reviews & you can choose to contact him/her either video-call or phone-call or chat, either through your phone, tablet, laptop or using App.

2. For Corporates:

You can enjoy attractive packages with competitive prices & great discounts on higher packages, available for all of your employees, with high quality & cost reduction.

3. **For onsite workers:** at factories, wells & mines at remote areas using telemedicine devices.



Eshfaa

Telemedicine



☎ 01200777738



6. Eshfaa Family:

Design your specifically tailored customized healthcare services assurance program or insurance plans, You can choose for your family, what is more suitable for you from the following options:

1. Having **customized medical support group** for your family case management, care coordination & requesting "on-demand discounted medical services" up to 60% discounts, Without any monthly or annual subscriptions, without buying cards, pay only for the service you need with discounts & enjoy "Value-based care"
2. Buying **discount cards** for your family, enjoy discounts upto 70%, go by yourself to hospitals & healthcare providers of strong network.



Eshfaa Family



01200777738




7. Eshfaa Geriatric:

This program is managed by highly qualified experienced staff of "**Geriatric medicine**" specialists & consultants professional in medical managing of elderly cases with other specific specialties like neurology, psychiatry, urology, ophthalmology, ENT, internal medicine, cardiology & other geriatric relevant specialties. We manage **care coordination** between geriatric doctors, physiotherapists & nurses to deliver integrated compatible long-term elderly care with all needed specialties either in geriatric medicine, physiotherapy or nursing, either **at home care services** or at **centers or hospitals**. In addition, we provide other **diagnostic & therapeutic** services that our senior patients may need, professional guidance, receive reports of each step & make your parents enjoy best **patient experience management**.


eshfaa
إشفاء

Eshfaa Geriatric

 **01200777738**
     **eshfaa**
 **www.eshfaa.com**

8. Eshfaa CDM:

- This program is designed for professional case management & care coordination for patients who suffer from **chronic diseases** to deliver best Chronic Disease Management (CDM).
- Telemedicine** plays important role in CDM, through continuous follow up of patients by **online consultations**
- In addition we can provide all **homecare services** for our patients, or coordinating any required medical service at different **healthcare facilities**.
- We provide **medication management** for CDM patients & deliver monthly medications at home with discounts
- We support **insurance corporates** by providing CDM for their customers, to avail **more convenience** for them & achieve **efficient cost reduction** for insurance parties.

Eshfaa CDM



9. Eshfaa Peri-natal: TM

-This program is designed for females in **child-bearing** period, to support them with best follow up, health awareness, case management & care coordination through **peri-natal period**, starting from the 1st day of **pregnancy**, following up through over pregnancy, providing best **ante-natal care**, coordinating **delivery**, then providing **post-natal care & follow up** for the mother & her **baby** from his 1st day, following through over **lactation**, up to **weaning**.

-**Telemedicine** plays important role in this program by continuous follow up of the mother through her long journey with best patient experience management with best follow up.

Eshfaa *Peri-natal*





10. Eshfaa Special:

The 1st healthcare program specially designed for **people with disabilities**, for professional case management & care coordination for everyone of them, whatever his/her disability is, either **congenital** or **accidental**, starting from monitoring & follow up from the 1st moment that a pregnant mother discovered that her baby will have congenital anomaly, genetic disorder, mental or physical disability, then post-natal care of this mother & her baby, coordinating all diagnostic & therapeutic medical services, continuous follow up & monitoring during the journey of this special son/daughter through infancy, childhood, adolescence & different stages of their life, before all of that we don't forget psychological & spiritual support for those special parents.



Eshfaa *Special*



Eshfaa Services:





Eshfaa Medical Network

We have **4500** Providers including:
(Hospitals – Medical centers – polyclinics
– Clinics – Labs – Radiology –
physiotherapy centers and pharmacies).

We are covering all governorates of
Egypt, soon at KSA.

We can offer discounts on all Medical Services for Corporates, Charities & NGOs:

- **Up to 50% discount on Labs services.**
- **Up to 30 % discount on Radiology centers.**
- **Up to 25% discount on Hospitals (In Patient services).**
- **Up to 12% discount on Pharmacies.**
- **Up to 10% discount on Home Care Services.**

You can subscribe and have access to all medical services through our multiple medical networks without any annual or monthly subscription fees and without buying discount cards for your employees.



Eshfaa Medical Network Partners



Wadi El-Neel

Yodawy
Medicine Delivery App



BOKDOC

Wayak
لصحتك ودواك



Hospitals Network

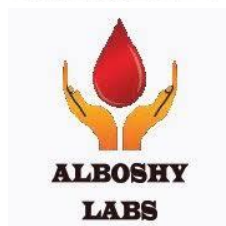


Hospitals Network

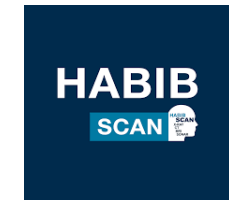




Laboratory Network



Radiology Centers Network



Pharmacies Network



Eshfaa Partners of Corporates

NASCO

MIDDLE EAST



Eshfaa Partners of Charities & NGOs



How to **Contact / Reach** us at Eshfaa?

 [01200777738](tel:01200777738)

 [01200777738](tel:01200777738)

 <https://eshfaa.com>

 Info@eshfaa.com

 www.linkedin.com/eshfaa

 www.facebook.com/eshfaa1

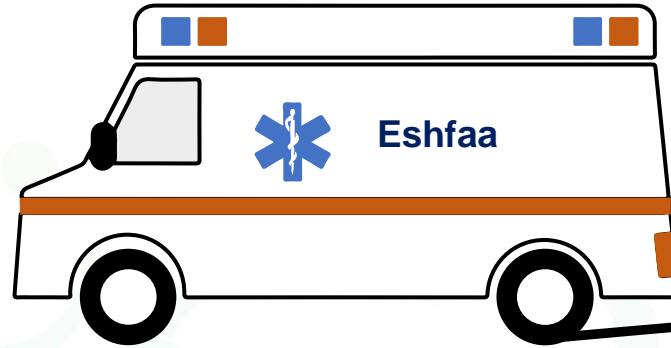
 www.instagram.com/eshfaa1

 youtube.com/channel

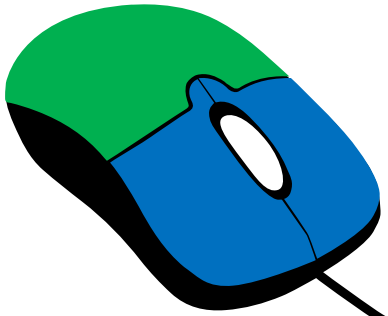
 www.twitter.com/eshfaa

 **3 Makram Ebeid Street, Nasr City, Cairo, Egypt.**





Thank You



www.Eshfaa.com



01200777738